
SWsoft, Inc.

Plesk 7.5 for Windows Installation Guide

Installation Guide



(c) 1999-2005

*SWsoft, Inc.
13755 Sunrise Valley Drive
Suite 325
Herndon
VA 20171 USA
Phone: +1 (703) 815 5670
Fax: +1 (703) 815 5675*

*Copyright © 1999-2005 by SWsoft, Inc. All rights reserved
Distribution of this work or derivative of this work in any form is prohibited unless prior written permission is
obtained from the copyright holder.
MS Windows, Windows 2003 Server, Windows XP, Windows 2000, Windows NT, Windows 98, and Windows 95
are registered trademarks of Microsoft Corporation.*

Contents

Installing Plesk 7.5 for Windows	4
Requirements	5
Installation Process	6
Post-Installation Issues	10
Installing Plesk 7.5 for Windows Using Command Line	13
Index	21

CHAPTER 1

Installing Plesk 7.5 for Windows

This chapter describes the installation process for Plesk 7.5 for Windows. There are two types of Plesk 7.5 for Windows installers:

- Web installer. This is a small executable, which will check the system configuration, download required components, check for updated setup version, download setup file(s) and run setup. Optionally, it can automatically install all released updates.
- Network installer. This is rather big executable file, which contains all components required by Plesk. Besides that, there are no differences between these two installer types.

Before downloading one of the installers, check the Requirements (see page 5) section of this guide.

In This Chapter

Requirements	5
Installation Process	6
Post-Installation Issues.....	10

Requirements

The Plesk 7.5 installation requires Microsoft Windows 2003 Server installed on your system and configured with static IP-address and QoS Packet Scheduler service enabled. IIS should be installed with WWW and FTP support. Plesk must be installed on NTFS partitions.

In order for your Windows 2003 Server to support SSI, ASP and FrontPage you need to select the respective components during IIS installation.

Note: Do not install Plesk on the machine serving as Windows Domain Controller, either primary or backup. If this requirement is not fulfilled, a system crash may occur in case when one creates a Plesk domain, which name coincides with the Windows Domain name.

Plesk 7.5 for Windows does not work when Domain Controller is installed on the server.

If you plan to use Microsoft SQL Server DBMS support in Plesk, Microsoft SQL Server should be installed and configured to use standard or mixed security mode. If Microsoft SQL Server is not installed, you can select Microsoft Database Engine to be installed with Plesk and configured with administrator name 'sa' and random password, which you can change later on the **Server > Databases** page. If you chose to use external Microsoft SQL Server (i.e. if it was installed before Plesk), user should supply the password on the aforementioned page.

Warning: We strongly recommend that you install Plesk on a clean server; specifically, only the above-mentioned operating system components should be installed.

If you intend to use ColdFusion support in Plesk, ColdFusion should be installed on the server with Default Web Site chosen on the Web Server Selection step of installation. Otherwise, if you choose **All IIS Websites**, ColdFusion support will always be activated for all domains with enabled Physical hosting, regardless of the corresponding checkbox status.

Note: If you install ColdFusion on your server being logged in to Plesk, you should log out of the control panel and log in again in order for Plesk to detect ColdFusion.

Because there is infinite variety of computer system configurations, SWsoft cannot guarantee compatibility with any software. Therefore, there are some programs that cannot work with Plesk. They are listed below:

- Microsoft Free Sharepoint,
- Personal Tiny Firewall,
- F-Prot Antivirus,
- Black Ice,
- other antivirus/firewall software that may have malfunctions in blocking of potentially dangerous programs.

Installation Process

To install Plesk 7.5 for Windows:

- 1 Log in as "Administrator" or another user with Administrator's privileges.
- 2 Run the installer (either web installer or network installer). Follow the on-screen instructions.
- 3 If your machine has previous version of Plesk installed, the following screen appears:



Figure 1: Migration from previous Plesk versions

- 4 It allows choosing whether you want to migrate your data to the new Plesk version or delete the old version without migrating anything.

Warning: As the migration process was only tested in artificial (simulated) environments, individual issues might appear during migration of real systems. Therefore, we strongly recommend that you back up your system before starting the migration process.

Note: If you use the option of deleting of all your current data, only data in Plesk is deleted - sites in IIS are not deleted as a fallback measure in case something goes wrong. So, if you do not need them, you must delete them manually after installing Plesk.

- 5 There also can be issues with file locking during migration if you use some third-party components placed in Plesk installation folders. Therefore, uninstall all third-party software from Plesk folders before starting the migration. If you need these components, you will have to reinstall them after the migration.

Note: if Plesk 7.0 for Windows was installed on Windows 2000 (which has IIS 5.0), but you installed Windows 2003 Server (having IIS 6.0) after that and now want to install Plesk 7.5 for Windows with migration, Plesk installer will not switch IIS 6.0 into the IIS 5.0 compatibility mode, which may cause some issues with sites functioning.

During migration from Plesk 6.5 for Windows, problems with long user names can appear. Therefore, you must reduce the following users' names down to 15 characters via the control panel: web users' names, FTP/FrontPage users' names, and subdomain users' names.

- 6 If your machine has Helm control panel installed, Plesk will ask you whether you want to migrate all your Helm data to Plesk or delete them:

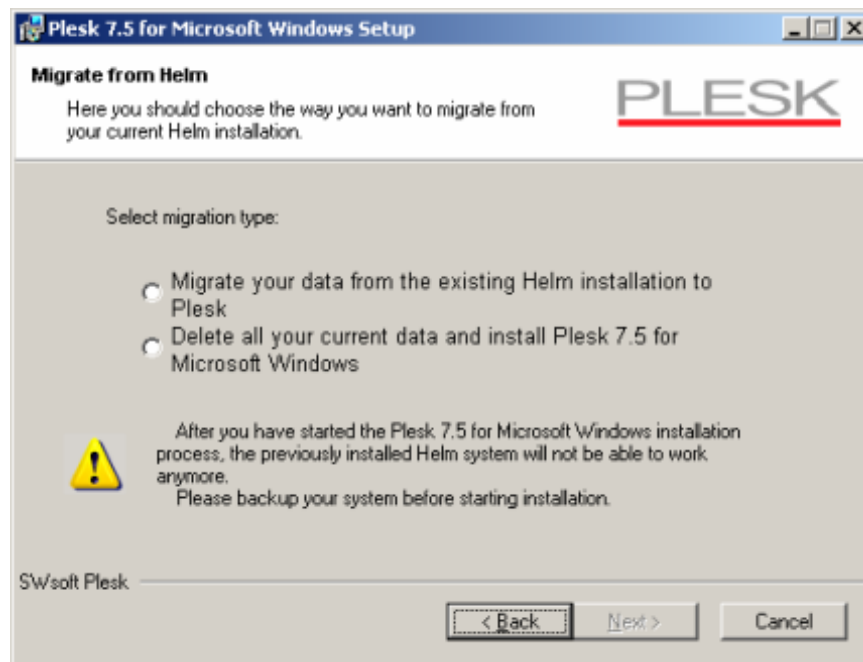


Figure 2: Migration from Helm

We recommend backing up the system before starting the migration process. The process of migration from Helm is fully described in the "Helm to Plesk 7.5 for Windows Migration Guide". Please, read it before starting the migration, because it presents detailed information on the mapping between Helm and Plesk objects and actions you should take after the migration.

- 7 Depending on the installation type, the installer may ask you to choose installation paths:

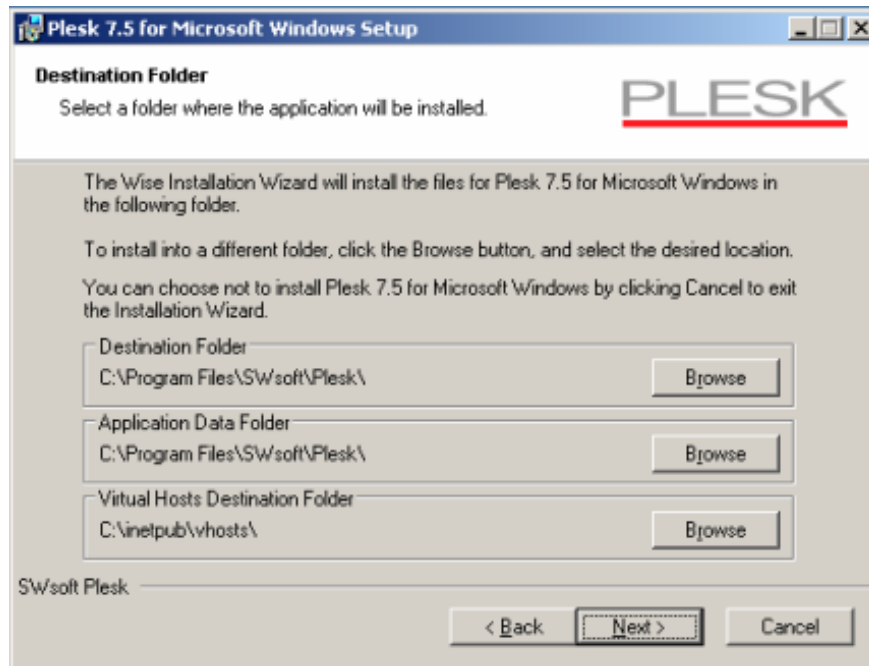


Figure 3: Choosing installation paths

- 8 After that, choose the installation type: Typical, Complete or Custom:

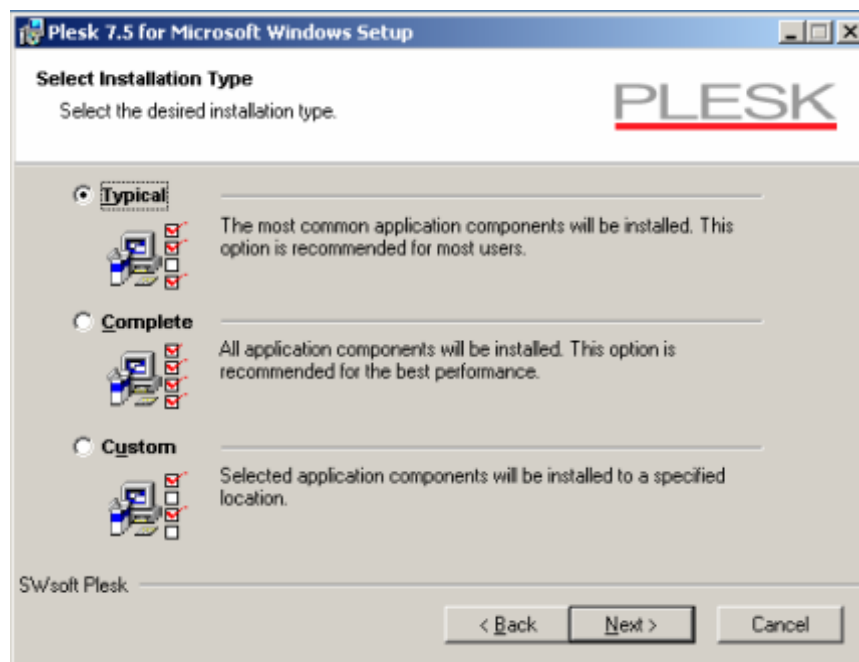


Figure 4: Choosing installation type

- 9 Then Plesk installer presents you with the IIS scalability options screen:

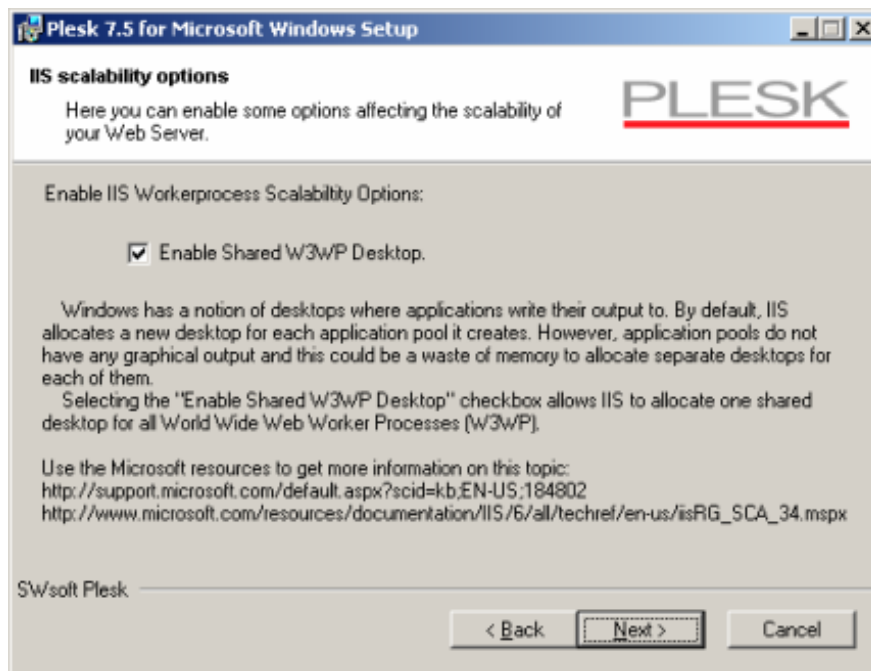


Figure 5: Choosing scalability options

Windows has a notion of desktops where applications write their output to. By default, IIS allocates a new desktop for each application pool it creates. However, application pools do not have any graphical output and this could be a waste of memory to allocate separate desktops for each of them. Selecting the **Enable the use of a Shared W3WP Desktop** checkbox allows IIS to allocate one shared desktop for all World Wide Web Worker Processes (W3WP). Note that sometimes this setting could cause problems. Use the following Microsoft resources to get more information on this topic:

<http://support.microsoft.com/default.aspx?scid=kb;EN-US;184802>

http://www.microsoft.com/resources/documentation/IIS/6/all/techref/en-us/iisRG_SCA_34.aspx

10 When the installation is finished, restart confirmation is requested.

11 After restarting, Plesk launches automatically.

In order to complete the Plesk initial configuration, you need to login to Plesk on your host at https://machine.domain_name:8443/ or <https://IP-address:8443/>

The default user name is "admin" and the default password is "setup". Both are case sensitive. For security reasons this password should be changed upon the initial login.

Post-Installation Issues

If you have Tomcat and MailEnable Professional installed simultaneously on your server, it is a conflicting setup, because HTTPMail component of MailEnable Professional and Tomcat share the same port 8080.

Therefore, you must resolve the conflict manually. It is easier to change the port on the MailEnable Professional side. From the Start menu select the program shown below:

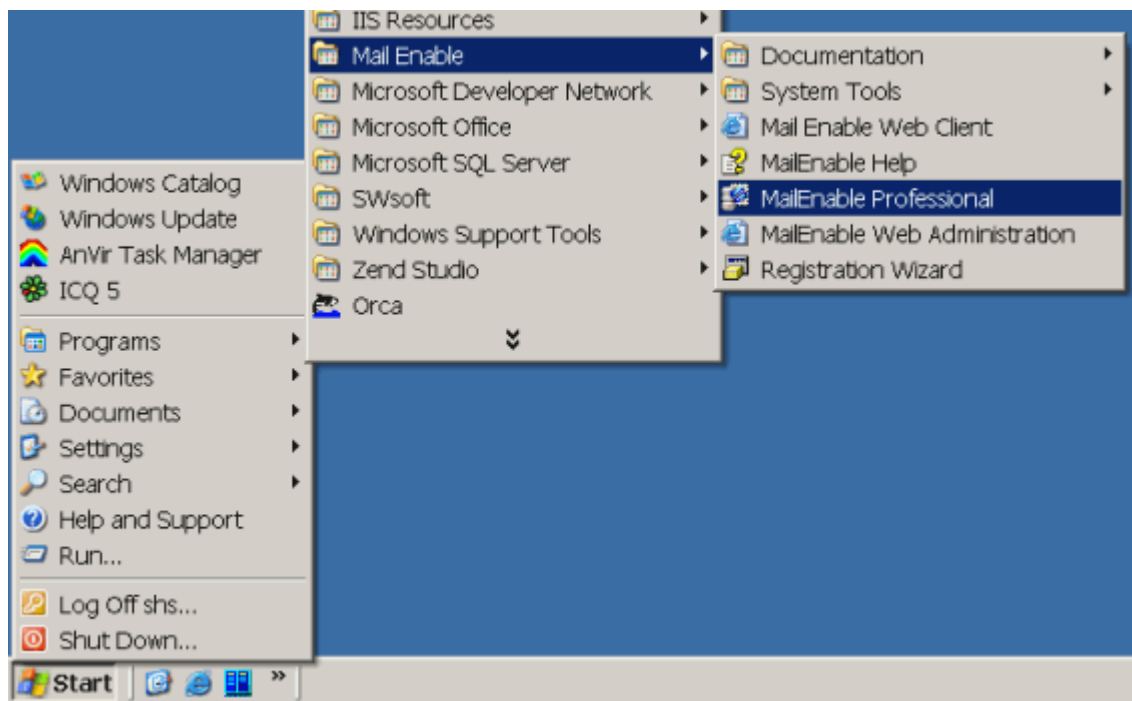


Figure 6: Starting MailEnable Professional Management Console

It will run MailEnable Professional management console. There, go to the properties editing dialog as shown on the picture below:

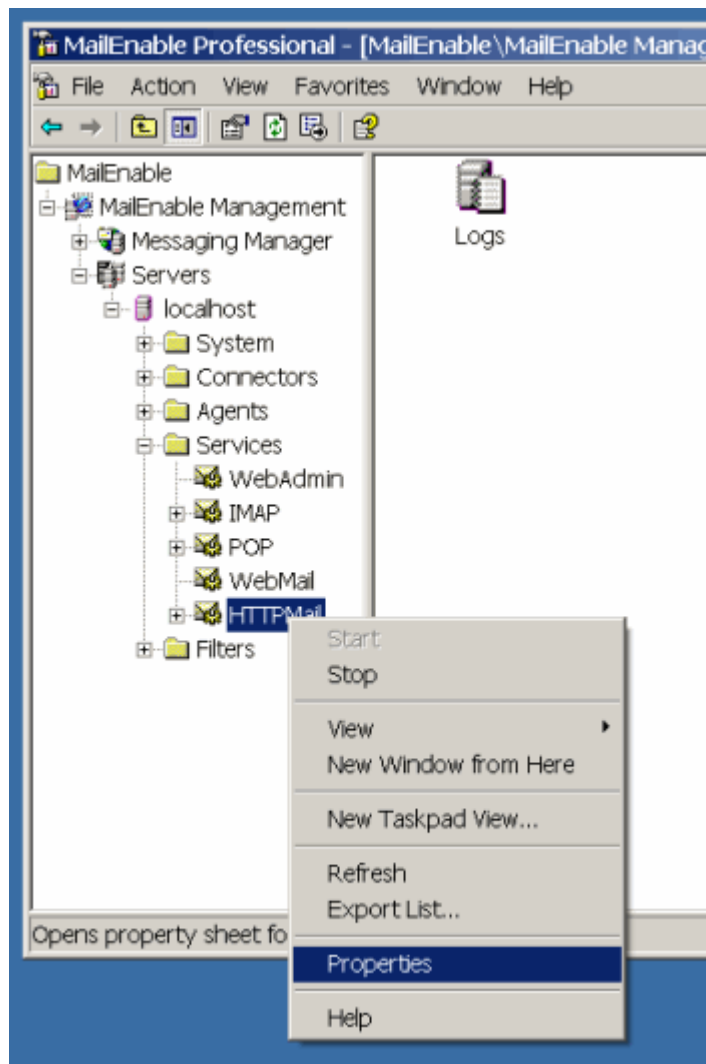


Figure 7: Setting up properties of HTTPMail service

Change the value 8080 in the HTTPMail Port edit field to some other value in such way that it does not coincide with a port used by some other program. For example, change it to 8081.

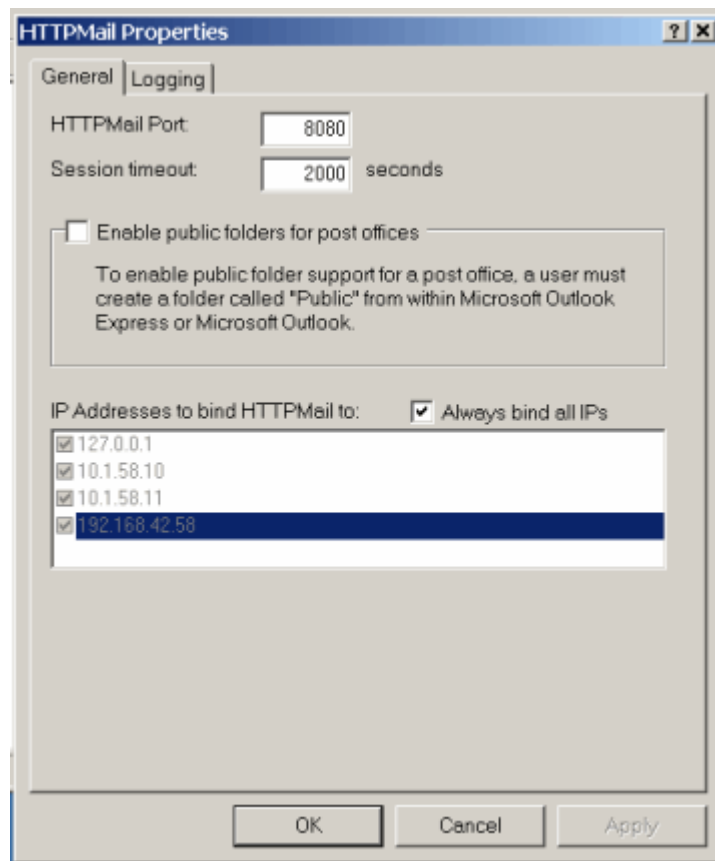


Figure 8: Changing the HTTPMail Port

After clicking the OK button follow the instructions on screen. After that, the conflict will be resolved.

CHAPTER 2

Installing Plesk 7.5 for Windows Using Command Line

You can install Plesk using either graphical step-by-step installer or the command line. This chapter describes the second installation method.

If you use the Plesk Network Installer, you should extract the *.msi installer first. To do this, unpack the Network Installer executable file with the WinRAR program (<http://www.rarlab.com/>) in some folder. You will get a set of *.msi and *.cab files. Locate the file with name like plesk_7.5.x_buildyyyy.msi, where x and y stand for the program version. This is the main installer file.

You perform the installation by opening the command prompt (Start menu -> Run -> cmd.exe) and typing the following command:

```
msiexec /i <name of the aforementioned *.msi file or GUID> <variable name1>=<value1> <variable name2>=<value2> ... <variable nameN>=<valueN>
```

For example:

```
msiexec /i plesk_7.5.0_build050217.19.msi INSTALLDIR="c:\plesk bin" DATADIR="d:\plesk data"
```

This command instructs the installer to install Plesk into the "c:\plesk bin" directory and its data into the "d:\plesk data" directory.

If you use the Plesk Web Installer, the command line to accomplish the same action is:

```
setupplesk.exe INSTALLDIR="c:\plesk bin" DATADIR="d:\plesk data".
```

Below is the list of variables you can use:

Variable	Description	Version	Default value
General Variables			
MSSQL_SA_PWD	Password of the 'sa' user in MSDE	7.5.0	<randomly generated>
DOWNLOADFILES	Specifies whether the Web installer should download files from SWsoft's server (value should be either "yes" or "no")	7.5.0	yes
ADMINMYSQL_PORT	Port number used by administrator's MySQL server	7.5.0	8306
ADMINAPACHE_SERVER_PORT	Port number used by the control panel	7.5.0	8443
Directories			

SETVHOSTSDIR	Specifies where virtual hosts reside	7.5.0	[Inetpub]vhosts
ACRONIS_TIA_INSTALLDIR	Acronis True Image Agent installation path	7.5.0	[ACRONIS_INSTALLDIR]TrueImageAgent
ACRONIS_TIC_INSTALLDIR	Acronis True Image Console installation path	7.5.0	[ACRONIS_INSTALLDIR]TrueImageConsole
ACRONIS_TIS_INSTALLDIR	Acronis True Image Server installation path	7.5.0	[ACRONIS_INSTALLDIR]TrueImageEnterprise
ADDITIONAL_INSTALLDIR	Additional components installation path	7.5.0	[INSTALLDIR]Additional
DATABASE_DATADIR	Place where databases reside	7.5.0	[DATADIR]Databases
DATABASE_INSTALLDIR	MySQL and MSDE DBMSs installation path	7.5.0	[INSTALLDIR]Databases
DATADIR	Place where Plesk data resides	7.5.0	[INSTALLDIR]
MSDE_INSTALLDIR	MSDE installation path	7.5.0	[DATABASE_INSTALLDIR]MSDE
INSTALLDIR	Plesk installation path	7.5.0	[Program files]SWsoft\Plesk

As Plesk uses the Microsoft Installer technology, it supports all of its standard parameters, which you can find here:

http://msdn.microsoft.com/library/en-us/msi/setup/command_line_options.asp

For example, to automate the Plesk installation, use the ‘silent’ installation mode with the command line switch /q (you still can use variables for specifying options):

```
msiexec /i <*.msi file or GUID> /q
<variable name1>=<value1> <variable name2>=<value2> ... <variable nameN>=<valueN>
```

You can choose what features you want to see installed. Each feature has an identifier (ID) and many can be installed in the user-specified locations.

You specify the feature list in the ADDLOCAL property of the Plesk installation command:

```
msiexec /i <*.msi file or GUID>
<variable name1>=<value1> <variable name2>=<value2> ... <variable nameN>=<valueN> ADDLOCAL = <FeatureID1>, <FeatureID2>, ..., <FeatureIDN>
```

The following list contains descriptions of the Plesk for Windows features and components, which could be installed, along with the corresponding Feature ID’s and location variables (where available). You can change the location variables in the command line for changing the default installation locations. Note that Feature ID’s are case-sensitive. (‘MySQL’ is not the same as ‘mysql’!)

Feature ID	Parent Feature	Title	Description	Location variable
PleskCP		Plesk Core	Installs Plesk components	INSTALLDIR

DatabaseServers		Database Management	Contains SQL database servers and ODBC drivers	DATABASE_INSTALLDIR
PleskAppVaults		Plesk Site Applications	Contains ready to use application packages	APPVAULT_INSTALLDIR
KasperskyAV	AntiVirus	Kaspersky	Installs Kaspersky AV 4.0.2.26	
MySQL	DatabaseServers	MySQL Database Server	Installs MySQL 4.1.8-nt	MYSQL_INSTALLDIR
PortalSK	StarterKits	Portal Starter Kit	Installs Starter Kit demonstrating how to use ASP.NET and the .NET Framework for building a dynamic portal application	PORTALSK_INSTALLDIR
ReportsSK	StarterKits	Reports Starter Kit	Installs Starter Kit demonstrating a simple data reporting solution for displaying multiple views on data, creating charts, and rendering any type of data in a Web application	REPORTSSK_INSTALLDIR
TimeTrackerSK	StarterKits	Time Tracker Starter Kit	Installs Starter Kit demonstrating how to build a line-of-business ASP.NET application to track time worked on projects	TIMETRACKERSK_INSTALLDIR
MySQLODBC	DatabaseServers	MySQL Connector	Installs ODBC driver (also known as the MyODBC 3.51 Driver).	
PhpMyAdmin	DatabaseServers	PHP MyAdmin	Installs Web-based MySQL manager (PHP MyAdmin 2.6.0-pl3).	
MSDNSSupport	DNSSupport	MS DNS support files	Installs files for supporting MS DNS Server.	
MerakSupport	MailServersSupport	Merak support files	Installs files for supporting Merak Mail Server.	

CommerceSK	StarterKits	Commerce Starter Kit	Installs Starter Kit demonstrating an ecommerce storefront application complete with shopping cart, product catalog, and a web service to submit orders.	COMMERCE_SK_INSTALLDIR
FTPSupport	SupportFiles	FTP Servers	Contains Microsoft, Gene6 and Serv-U FTP servers support files	
MSSQLWebAdmin	DatabaseServers	ASP.NET Enterprise Manager	Installs Web-based MS SQL manager 0.1.3	MSSQLWEBADMIN_INSTALLDIR
MSDE	DatabaseServers	Microsoft SQL Server Desktop Engine	Installs MSDE 2000 SP3 A.	MSDE_INSTALLDIR
Expand	PleskCP	Plesk Agent	Installs Plesk Agent that allows integration with third-party management systems	
DrWeb	AntiVirus	DrWeb Installs	Mail Antivirus 4.32.2.12010	DRWEB_INSTALLDIR
LonghornSkin	Skins	Longhorn	Longhorn Aero, Longhorn Black and Longhorn Yellow	
Uebimiau	PleskAppVaults	UebiMiau	Installs WebMail client with the folders support.	
postNuke	PleskAppVaults	postNuke	Installs Weblog/Content Management System (CMS).	
phpBook	PleskAppVaults	phpBook	Installs Guestbook application.	
phpBB	PleskAppVaults	phpBB	Installs customizable Bulletin Board application	
gtChat	PleskAppVaults	gtChat	Installs user-friendly Web Chat application	
bbClone	PleskAppVaults	bbClone	Installs advanced Web Counter application	
Tomcat		Tomcat	Contains Tomcat Java servlet engines	TOMCAT_INSTALLDIR
Additional			Script Engines Installs additional script engines. Contains Python, Perl, PHP	ADDITIONAL_INSTALLDIR

AWStats	Statistics	AWStats	Installs AWStats 6.0 that generates graphical reports on Web, FTP, Mail servers' usage.	
WebMail	MailServers	WebMail Client	Installs Horde IMP 3.2.3 that provides web mail access to IMAP and POP3 accounts	
PHP	Additional	PHP	Installs PHP engine 4.3.10 (cgi-fcgi)	PHP_INSTALLDIR
osCommerce	PleskAppVaults	osCommerce	Installs on-line shop e-commerce solution	
Documentation		Plesk Documentation	Installs Plesk user's guides	
Webalizer	Statistics	Webalizer	Installs Webalizer V2.01-10 English that produces web server usage reports in HTML format	WEBALIZER_INSTALLDIR
Bind	DNSServers	BIND DNS Server	Installs BIND DNS Server 9.2.4	BIND_INSTALLDIR
Mambo	PleskAppVaults	Mambo CMS	Installs Web content management system	
BackupSystems		Backup Systems	Contains Acronis	
SpamAssassin	MailServers	SpamAssassin	Installs SpamAssassin 2.64 which is an application intended to identify e-mail spam messages.	SPAMASSASSIN_INSTALLDIR
Perl	Additional	Perl	Installs Perl v5.8.6 built for MSWin32-x86-multi-thread	PERL_INSTALLDIR
JDK	Tomcat	Java 2 SDK	Installs Java Software Development Kit	JDK_INSTALLDIR
Python	Additional	Python	Installs Python 2.4.3	PYTHON_INSTALLDIR
MailEnable	MailServers	MailEnable Mail Server	Installs MailEnable Standard 1.8	MAILENABLE_INSTALLDIR

DNSSupport	SupportFiles	DNS Servers	Contains MS DNS and BIND support files	
AcronisImage Agent	Acronis	True Image Agent	Installs on a remote system to enable access from Acronis True Image Management Console	ACRONIS_TIA_INSTALLDIR
MailServers		Mail Management	Contains Mail Enable Mail Server, WebMail Client and Spam Filtering program	MAILSERVERS_INSTALLDIR
StarterKits		ASP.NET Starter Kits	Contains sample ASP.NET applications that provide code to accomplish common Web development tasks	STARTERKITS_INSTALLDIR
Statistics		Statistics	Contains programs intended to analyze web server log files	
CommunitySK	StarterKits	Community Starter Kit	Installs Starter Kit enabling an individual or an ISP to quickly create a community Web site such as a user group site, a developer resource site, or a news site	COMMUNITYSK_INSTALLDIR
PDFDoc	Documentation	PDF Format	Installs Plesk user's guides in PDF format	
HTMLDoc	Documentation	HTML Format	Installs Plesk user's guides in HTML format	
PleskSkins	Skins	Plesk	Plesk Blue, Plesk Classic Silver, Plesk Nature, Plesk Sea, Plesk Silver and Plesk Violet	

AquaSkin	Skins	Aqua	Aqua and Aqua Compact	
WinXPSkins	Skins	WinXP	WinXP Blue, WinXP Reloaded, WinXP Reloaded Compact, WinXP Olivegreen and WinXP Silver	
AntiVirus		Antivirus	Contains DrWeb and Kaspersky antivirus programs	
AcronisEnterpriseServer	Acronis	Enterprise Server	Installs Acronis True Image Enterprise Server	ACRONIS_TIS_INSTALLDIR
AcronisManagementConsole	Acronis	Management Console	Installs Acronis True Image Management Console that helps to install and manage the Acronis True Image Agent on a remote machine: creates partition/disk backups, schedules data backup etc.	ACRONIS_TIC_INSTALLDIR
Skins		Plesk Skins	Installs custom styles of Plesk interface appearance	
Acronis		BackupSystems	Acronis True Image Enterprise ServerContains True Image Management Console, Acronis True Image Agent, and Acronis True Image Enterprise Server	ACRONIS_INSTALLDIR
SiteBuilder	PleskCP	Plesk SiteBuilder	Installs web-based WYSIWYG application that allows creating, modifying and updating websites	
DNSServers		DNS Servers	Contains BIND DNS Server	DNS_INSTALLDIR

For example, to install Plesk in silent mode with Acronis installed into the "c:\Acronis" directory and the PDF documentation installed into the default location, use the following command:

```
msiexec /i <*.msi file or GUID> /q ACRONIS_INSTALLDIR="c:\Acronis"  
ADDLOCAL = Acronis, PDFDoc
```

Note: We recommend specify all paths without the ending slash (\) (e.g. "c:\Acronis" instead of "c:\Acronis\"), because the ending slash can cause some problems later.

Some features have dependencies on other features. So, when you install such a feature, its dependencies are installed too. The following table lists such dependencies:

Feature	Master feature
Tomcat	JDK
AWStats	Perl
WebMail	PHP
SpamAssassin	Perl
SiteBuilder	PHP

Index

I

Installation Process • 6

Installing Plesk 7.5 for Windows • 4

Installing Plesk 7.5 for Windows Using
Command Line • 13

P

Post-Installation Issues • 10

R

Requirements • 5